

소프트웨어 시스템 연구실

Software System Lab. @ Chungbuk National University

- Laboratory for self-adaptive software -

Self Adaptive Software evaluates its own behavior and changes behavior when the evaluation indicates that it is not accomplishing what the software is intended to do, or when better functionality or performance is possible

이의종 교수 (Prof. Euijong Lee)



Vita

2020.9 ~ present Assistant professor

Dept. of Computer Science, Chungbuk National Univ.

2018.9 ~ 2020.8 Postdoctoral researcher

Dept. of Computer and Information Security, Sejong Univ.

2017.9 ~ 2020.8 Adjunct professor

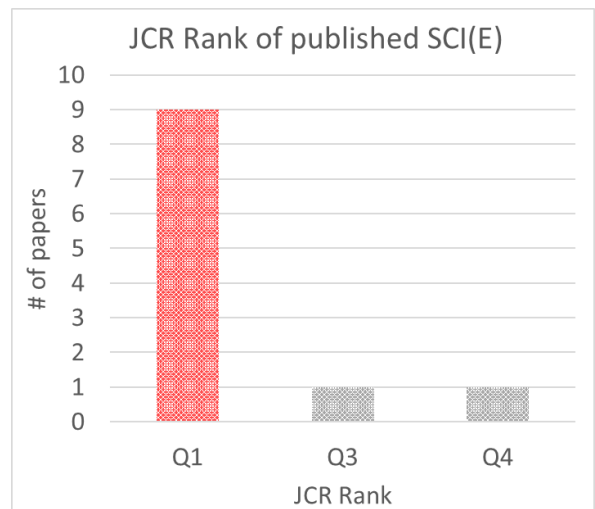
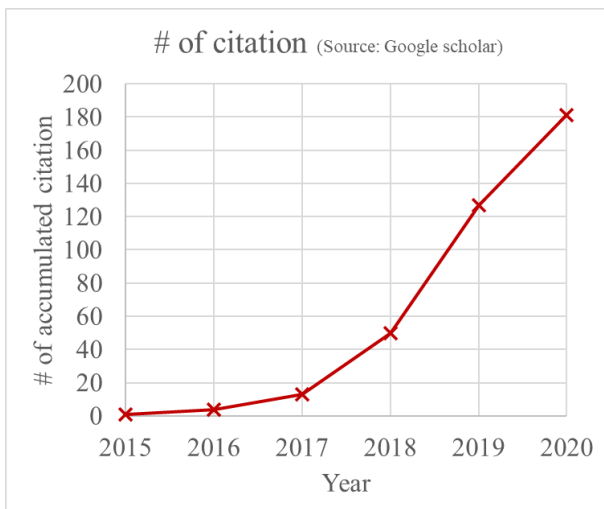
Dept. of Computer Science and Engineering, Seoul Cyber Univ.

Education

2018 - Ph.D. Dept. of Computer Science and Engineering, Korea University

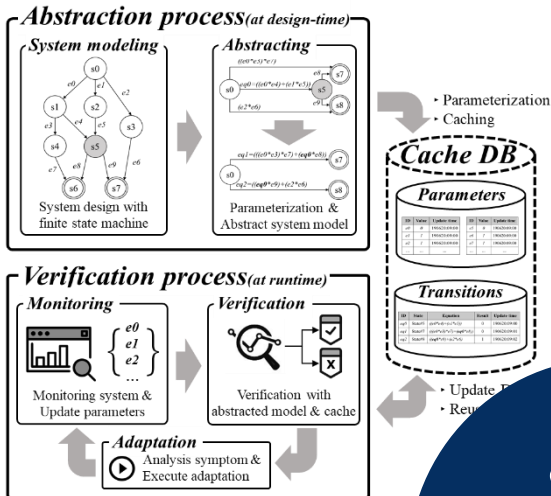
2012 - B.S. Dept. of Computer and Information Science, Korea University

Research Result (5 years)

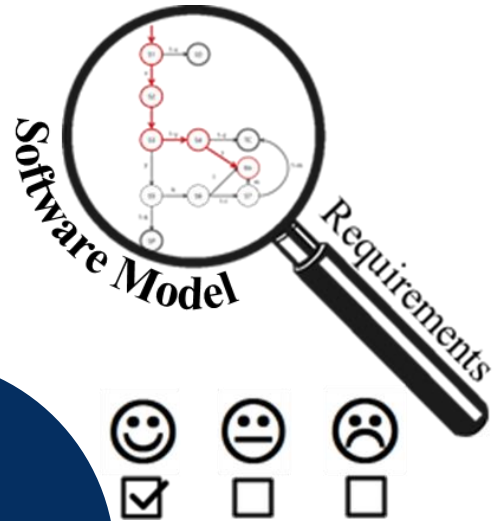


주요 연구 내용

Software Framework for Self-Adaptive Software



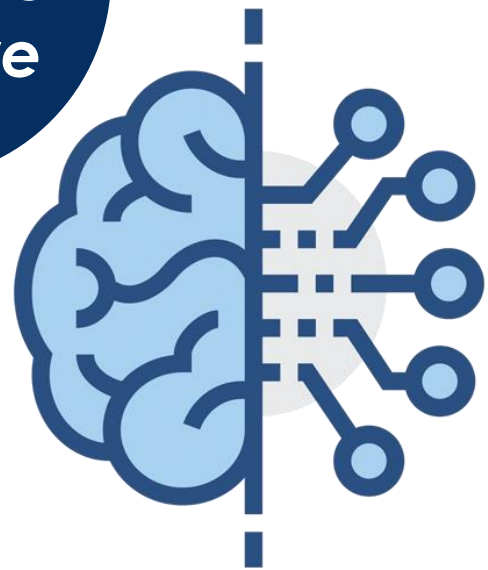
Modeling & Verification for Self-Adaptive Software



Self-Adaptive Software



Internet of Things
as Experimental Domain



Machine Learning
as Experimental Tool

소프트웨어 시스템 연구실
Software System Lab. @ Chungbuk National University